

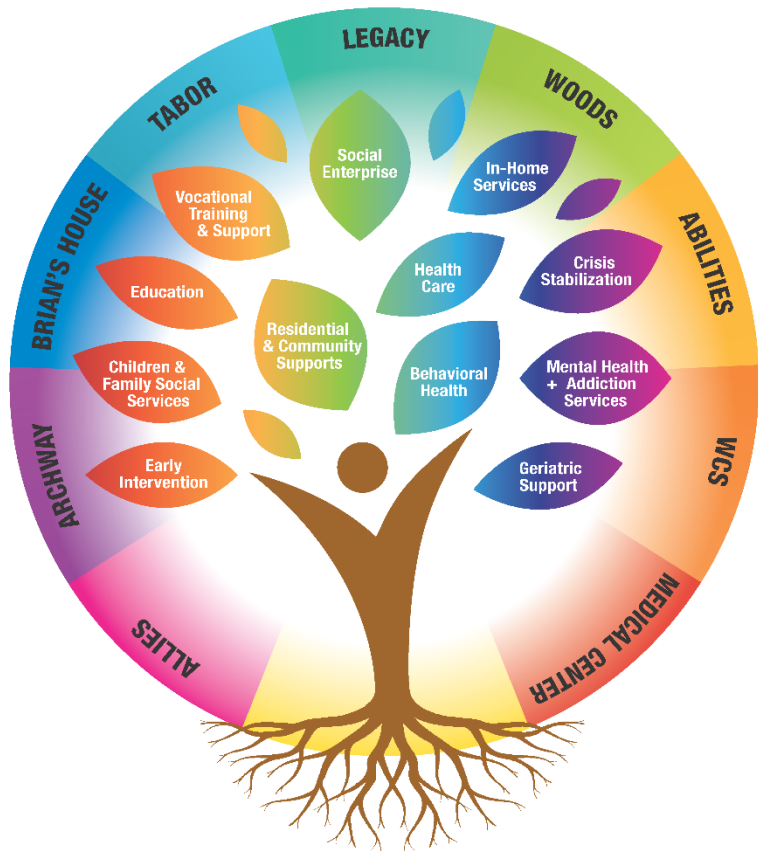


Woods System of Care



**The Arc of Pennsylvania
Advocacy and Policy Conference
June 6, 2023**

Woods System of Care



Woods Services is a population health management organization that, through its network of providers in PA and NJ, provides life cycle care to meet the lifelong needs of children and adults with intellectual disabilities and Autism (IDD), and /or mental health challenges who may also have complex medical and genetic conditions.

- Locations in Pennsylvania and New Jersey through Woods and six affiliates
- Serving **23,000+** children, adolescents, and adults
- Referrals from **175** school districts and **23** States
- Annual gross revenue of approx. **\$400** million
- **6,000** employees in the Woods Network

Woods System of Care Partners

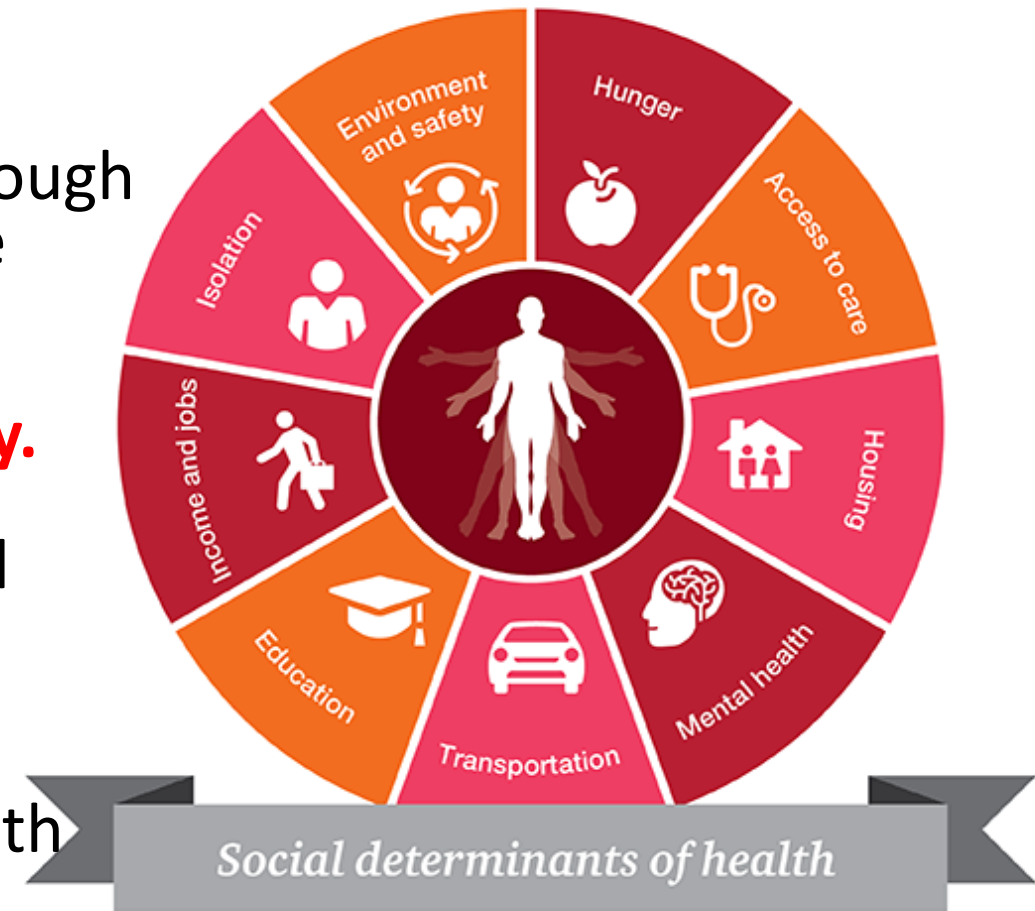
 <p>Abilities of Northwest Jersey Inc. <small>An Affiliate of Allies</small> Unlocking Potential • Empowering Success</p> <p>WORKFORCE DEVELOPMENT</p>	 <p>ALLIES INC. <small>An Affiliate of Woods</small></p> <p>NJ GROUP HOMES</p>	 <p>archway programs <small>...an affiliate of Woods</small></p> <p>EDUCATION</p>	 <p>LEGACY TREATMENT SERVICES <small>An Affiliate of Woods</small></p> <p>BEHAVIORAL HEALTH TREATMENT</p>	 <p>The Medical Center at Woods</p> <p>HEALTH CARE</p>	 <p>TABOR SERVICES INC. <small>An Affiliate of Woods</small></p> <p>CHILD WELFARE</p>	 <p>Woods Community at Brian's House <small>A Woods System of Care Provider</small></p> <p>PA GROUP HOMES</p>	 <p>WCS <small>A Woods System of Care Provider</small></p> <p>PA SPECIALTY HOMES</p>	 <p>Woods <small>Exceptional People. Fulfilling Lives.</small></p> <p>COMPLEX CONDITIONS</p>
--	---	--	---	---	--	--	---	---

We are dedicated to Population Health

Woods is organized around the principles of population health management and addresses the social determinants of health through a comprehensive continuum and system of care that connects **prevention, wellness, education, behavioral health, and social services with coordinated and integrated healthcare delivery.**

Addressing the whole person, including physical and behavioral health, is essential for positive health outcomes and cost-effective care.

Combining mental health services/expertise with primary care, specialty care and allied health can reduce costs, increase quality of care, and, ultimately, save lives.

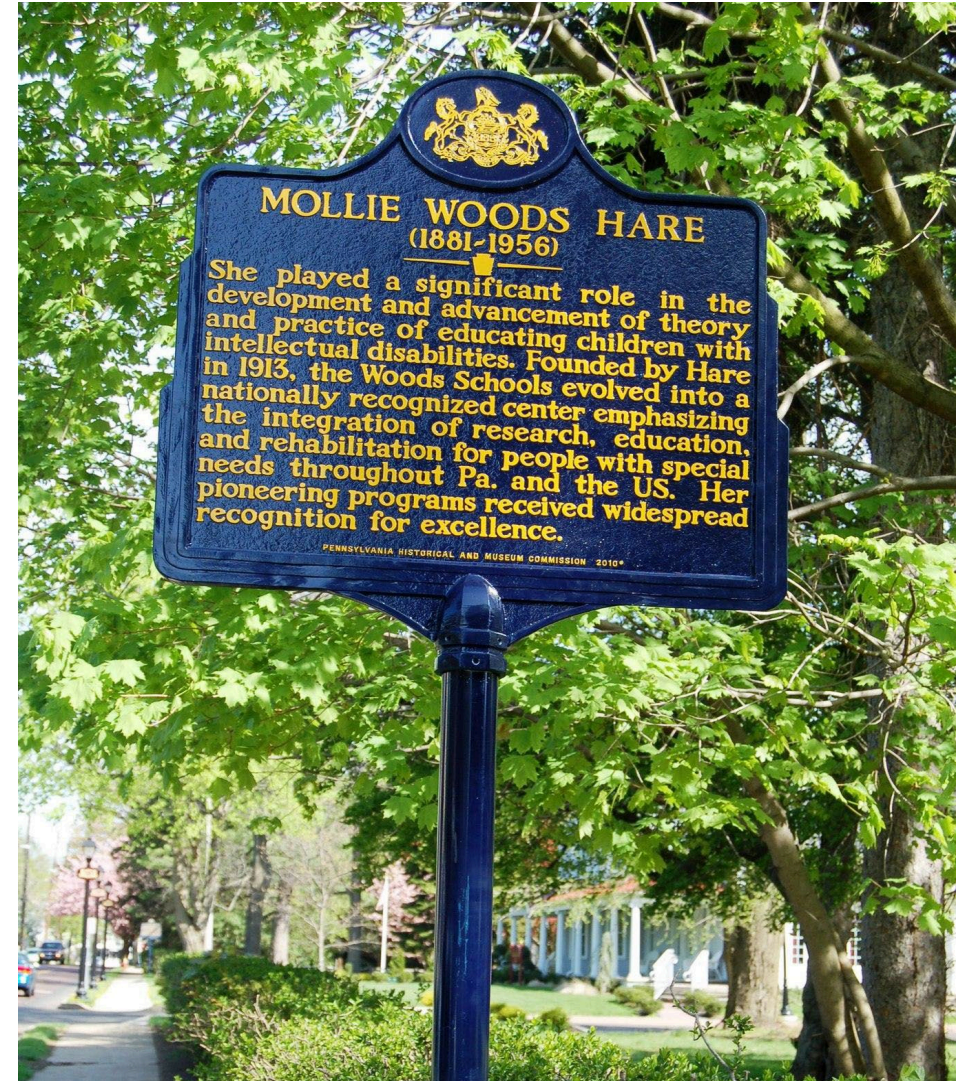


Our History

- Founded in 1913 by a teacher, Mollie Woods
- Moved to Langhorne in 1921 and opened the Woods School for the exceptional child with the hope they would avoid state and institutional placements
- Fought to get IDD population recognized and for their care to be supported globally

***“Woods has always been a pioneer...
We must continue in that tradition –
to pioneer and to grow – for that is living
itself”***

– Mollie Woods



Woods Today

- **Consumers** – We serve anyone with IDD through a full continuum of service options from social determinants to medical care. We specialize in serving those with complex medical, psychiatric and behavioral challenges
- **Community-based** – Less than 1.5% (and decreasing) of the 23,000 people Woods serves receive services in large residential settings
- **Flipped the residential campus** - now a geographic hub for an NCQA-recognized **Patient-Centered Medical Home** model and Woods System of Care administrative headquarters in Langhorne, PA
- **Integrated Care** (Primary Care, Behavioral Health and Psychiatry, Specialty Care, Allied Health, and Dental)
- Extensive **University partnerships** and Joint Ventures with hospital and health systems which enhance services AND **train the next generation of providers** (who could be coming to your area)
- **Care coordination** across specialties, health systems, and transitions between levels of care



**The Medical Center at Woods –
Foundation for Integrated
Care Model, Hospital at Home, and other New
Program Development Across the System of Care**



Transformation of Woods into a System of Care (2016-2021)


Reinventing the use of Woods' campus to build a System of Care:

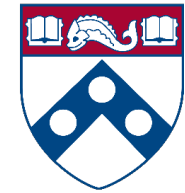
- Flipped the campus model to be transitional and a community-based center of excellence where services are available and open to the broader IDD community
- Created a population health-based system of care addressing all the needs across a lifespan for the IDD population
- Utilized the Medical Center at Woods as an essential hub to house a broad range of integrated medical, specialty, dental, and mental health services and more effectively coordinate care for people with complex needs
- Enhanced all medical and clinical services
- Established new critically-needed community-based and in-home services for people with complex needs
- Re-envisioned Woods campus space to:
 - 1) become an Integrated Care Center of Excellence to serve the IDD population with medical and behavioral health complexities;
 - 2) become a location for short-term transitional services, and serve as a resource for the state and county;
 - 3) expand special education, recreational, and therapeutic services to children and youth with IDD and behavior disorders; and
 - 4) build attainable workforce and community housing

Enhancements to the System of Care -- Integrated Health Services

 Woods Healthcare

 The Medical Center
at Woods

 Penn Dental Medicine
at Woods



 The Center for
Behavioral Health at Woods

What Comprises the Woods System of Care Network?

Social Determinants of Health



Patient-Centered Care Model



Same concept,
different buckets

Woods Model

- Services delivered through a network of affiliates
- Geographic concentration allows for better care coordination, intensity of services along a continuum that people can access episodically and throughout the lifespan
- *Tailoring services to meet the unique needs of each individual to create a full life-cycle of care management*



The Medical Center at Woods

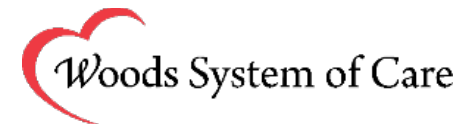
Allows for Replicable Integrated Care Model

- Structures vary by setting and context
- Partnerships with multiple hospitals and medical schools
- Training next generation of providers

Health System, Managed Care/Insurer and Academic Partnerships – PA and NJ



School of Medicine
TEMPLE UNIVERSITY®



Planning for the Future

- Healthcare, Dental, Behavioral Health and Psychiatric Services are available to people with IDD in the general public, not just those currently served by a Woods System of Care provider
- This model captures the goals identified in ODP's Selective Contracting Announcement:
 - Improved quality
 - Better integration of behavioral and physical health
 - More independence for individuals
 - Person-centered approaches
 - Capacity building
 - Choice
- Working with Legislators and Policymakers to eliminate red tape and make replicating this model easier
- Needs of the system include: State-wide access to integrated primary and behavioral care for the IDD population, reducing care gaps and regulatory barriers

Policy Challenges & Opportunities

Healthcare Access for Complex Populations

Our model increases care quality and saves Medicaid and Medicare dollars

- Integrated and specialized services keep people out of hospitals
- Medical Center model reduces ER visits and unnecessary hospital stays and can be replicated in partnership with hospitals and MCOs across PA

Workforce Crisis

Funding and rates are very important, but there are other ways we can help address this crisis:

- Affordable Housing for staff
- Streamline background requirements for new employees
- Sponsor Green Card-eligible friends and family members
- Help providers become an employer of choice
 - On-site employee healthcare
 - Provide free or low-cost higher education (500 people in college within Woods System of Care)



Policy Challenges & Opportunities



Increase the Ability of Medical Professionals to Serve Complex Populations

- SB 25 – Full Practice Authority for Nurse Practitioners
- Urge DHS to update regulations pursuant to Act 76 of 2022 – removed the requirement for outpatient psychiatric clinics to have a psychiatrist provide 50% of onsite time

Contact

Tine Hansen-Turton, MGA, JD
President and CEO
Woods Services
tine@woods.org

Thank you!