



# **Regional Health Equity Action Team**

Emily Lebo

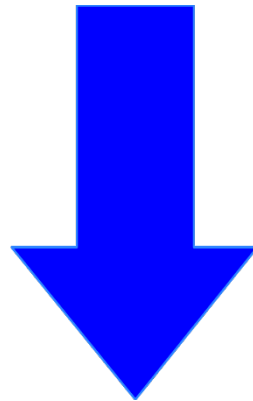
Office of Health Equity

Pennsylvania Department of  
Health

# Background

## COVID-19 Health Equity Response Team

COVID-19 and Population focused



## Health Equity Action Team

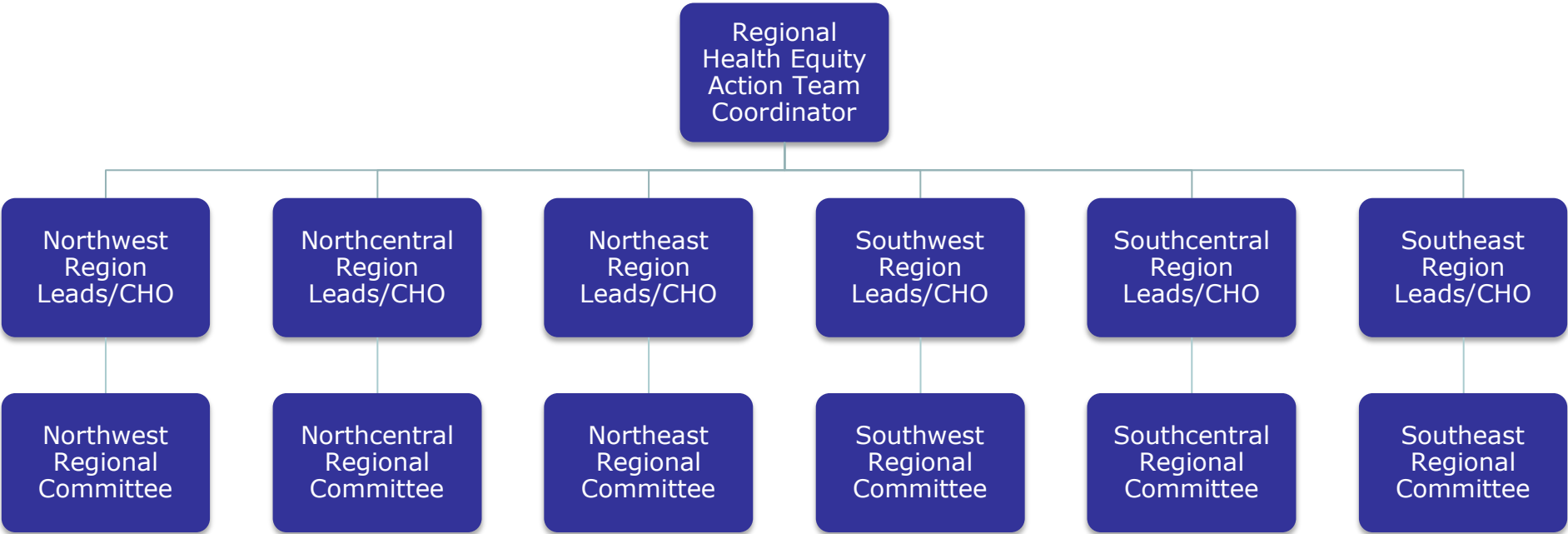
Community focused

# The Goal

## Regional Health Equity Action Team

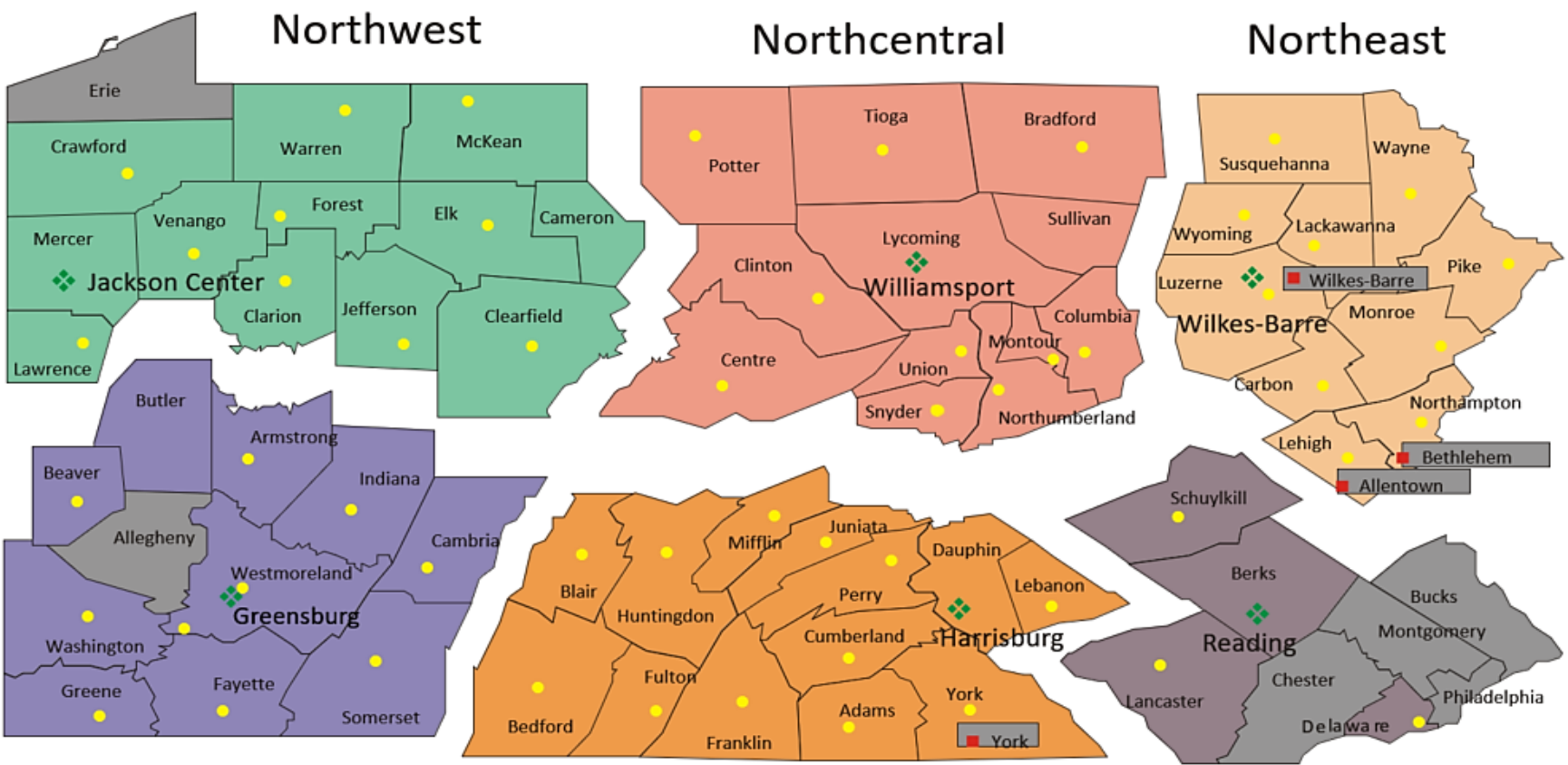
*Regionalize the evergreen aspects of the COVID-19 Health Equity Response Team recommendations to improve health equity across the Commonwealth*

# Regional HEAT Structure



# Geographical Breakdown

- County Health Departments
- Municipal Health Departments
- ◆ District Offices
- State Health Centers

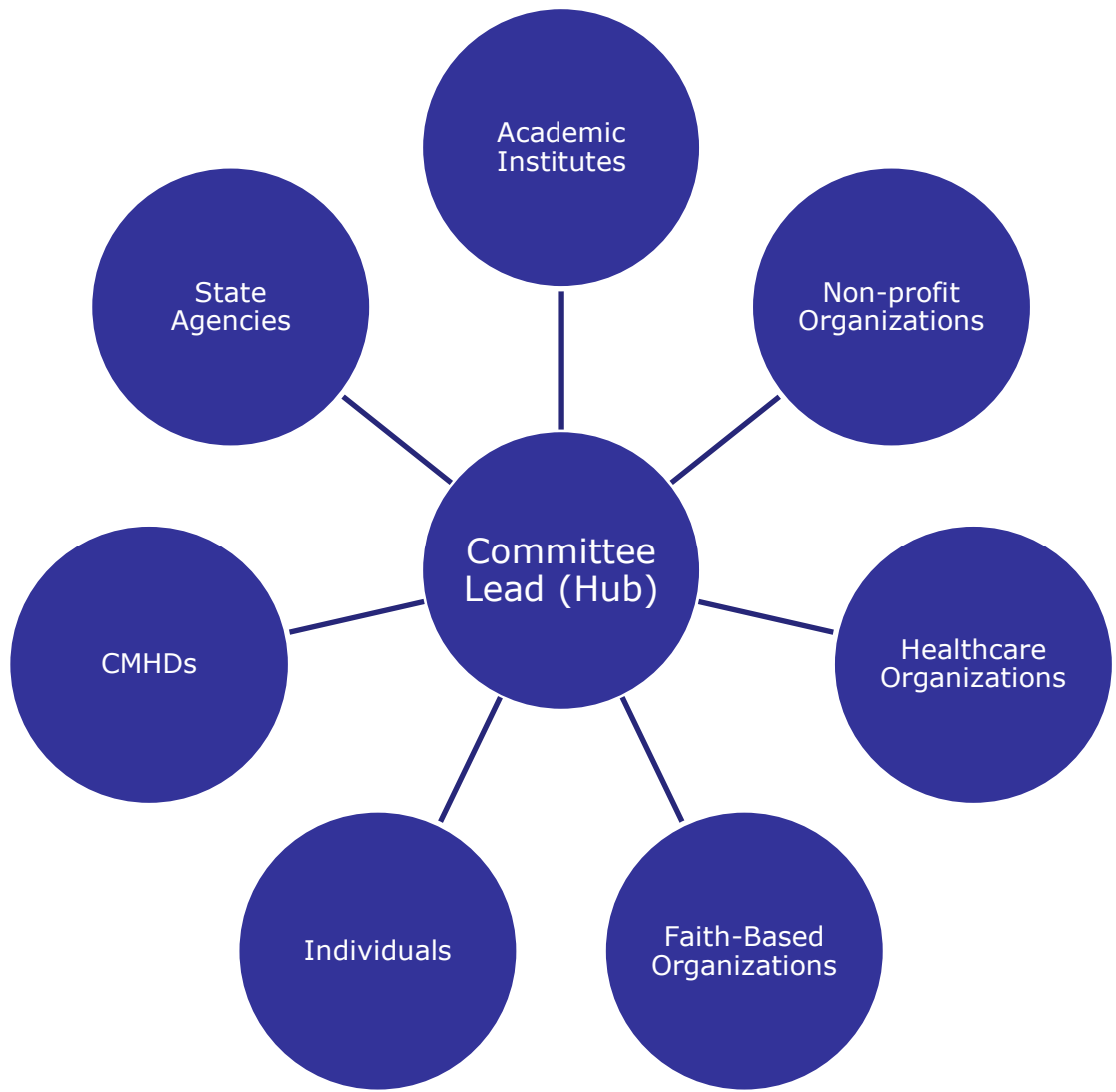


Southwest

Southcentral

Southeast

# Committee Creation



180+  
participants  
across all  
regions

# Groups Represented

- Primary Health Network
- Keystone Health
- PolicyLab at CHOP
- YMCA
- Volunteers of America of PA
- United Way
- Penn State College of Medicine
- PA State Agencies
- Achieva: The Arc of Greater Pittsburgh
- Elizabethtown College
- Black Equity Coalition
- CAAP
- Alzheimer's Association
- Erie County Department of Health
- Delaware County Department of Health
- Allegheny County Department of Health
- Philadelphia Department of Health

**AND MORE!**

# Our Vision





# Support

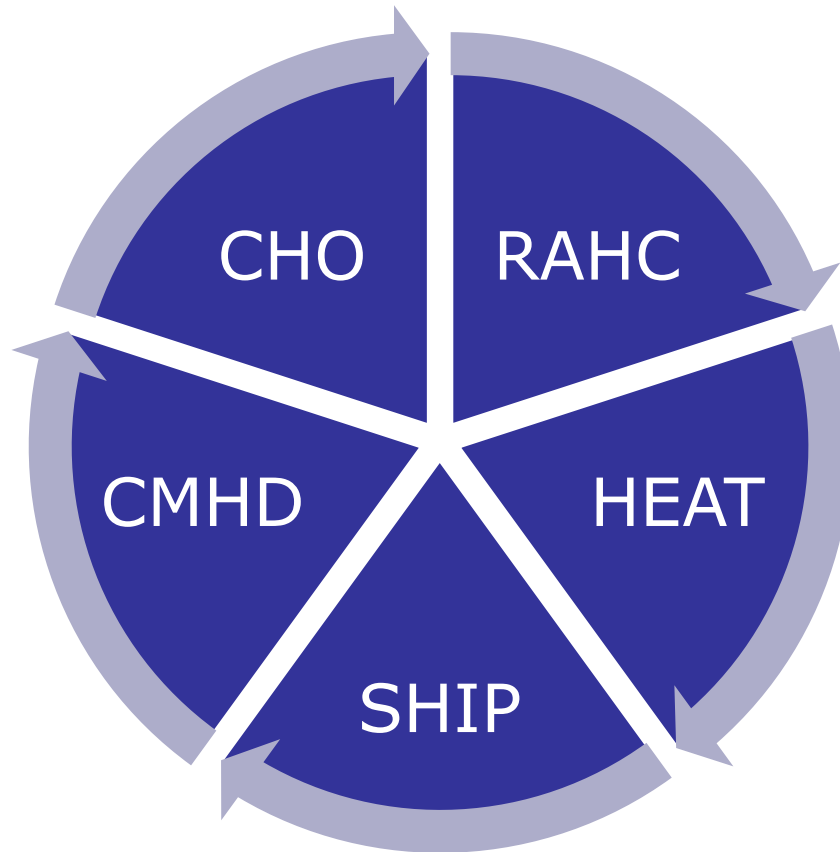
- Regional Committee Leads
  - Leading individuals
- Community Health Organizers
  - Support at the county level
- Office of Health Equity
  - Provide guidance if needed



# ▶ Goal Alignment

Resources

Experiences



Expertise

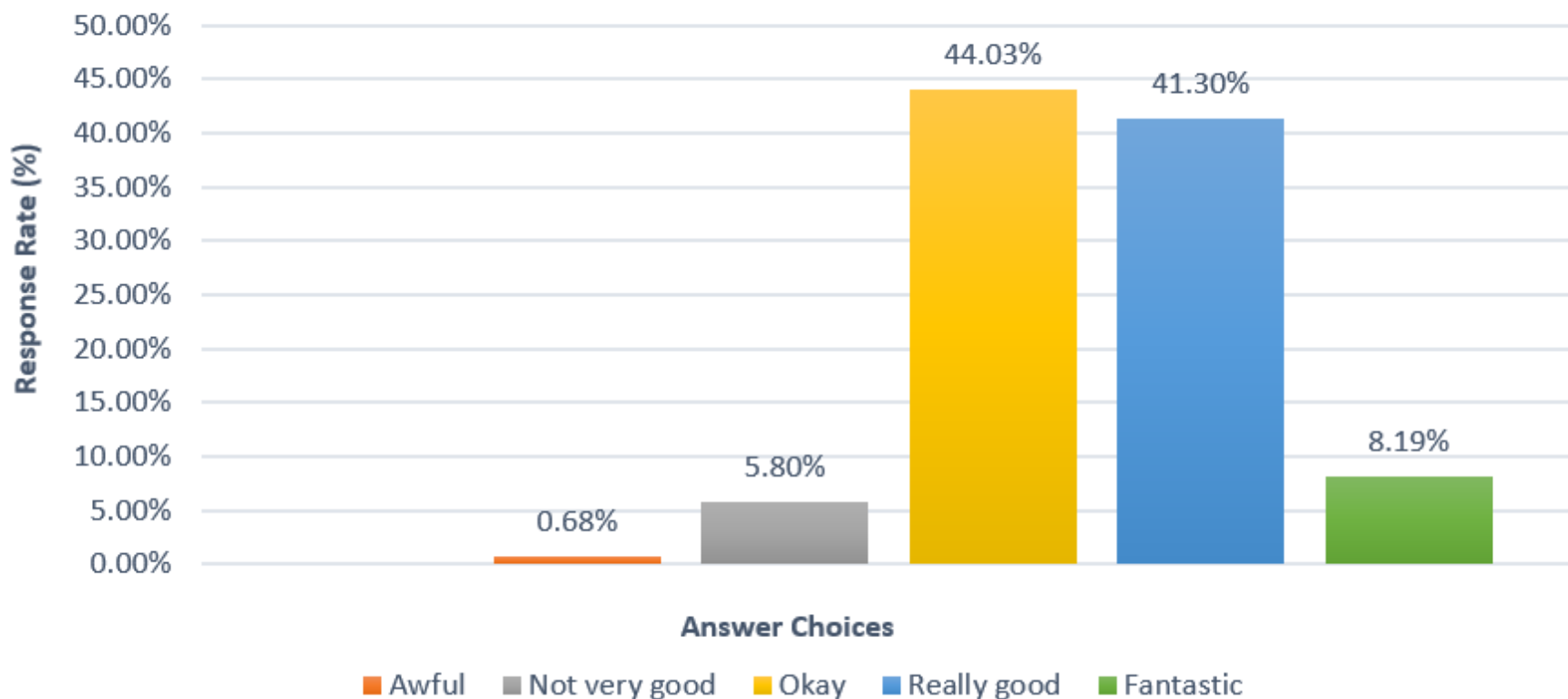
Support

# What have we done so far?

- Participated in community events across the state
- Dispersed vital public health resources
  - **Community Insight Survey completed**
  - PA State Health Improvement Plan Alignment
  - PA DHS Regional Accountable Health Councils Merge

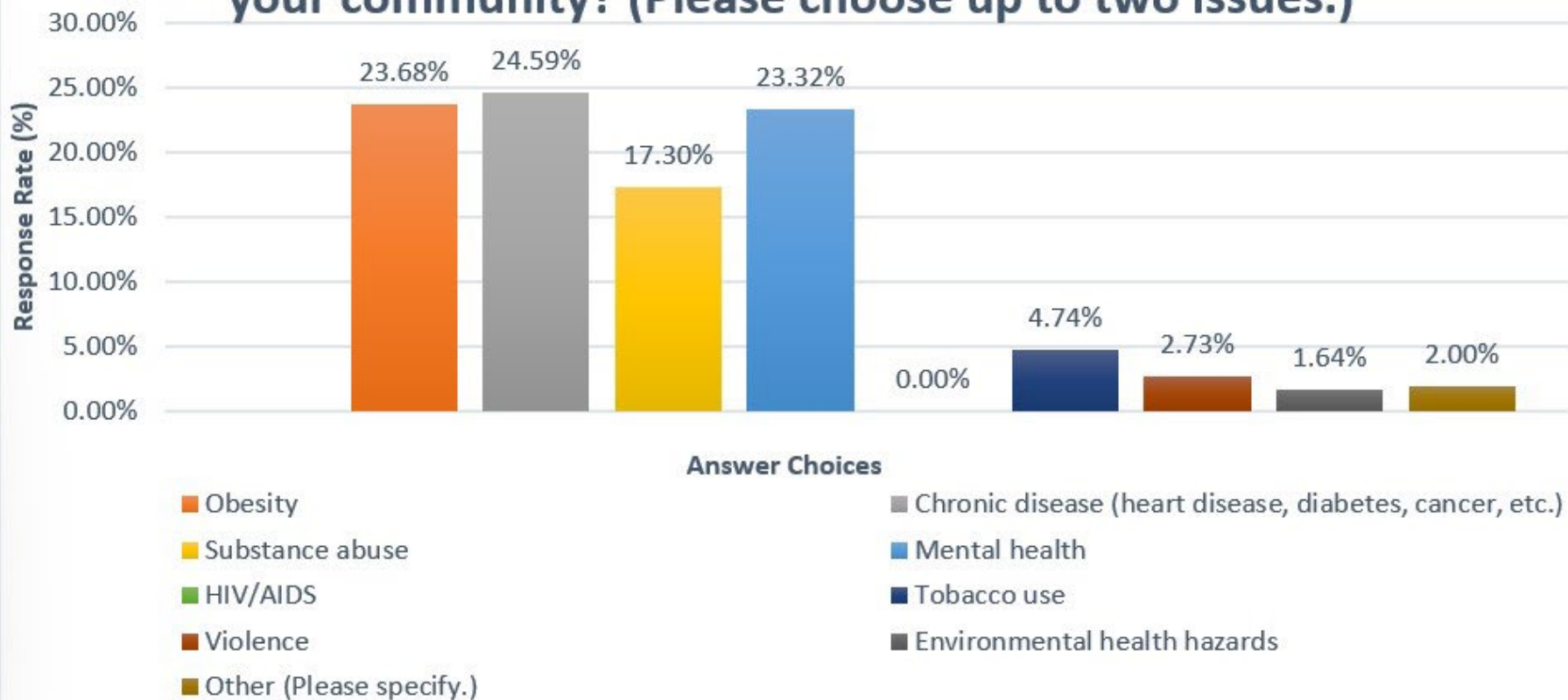
# Community Insight Survey Results

## Generally, how would you describe your health?



# Community Insight Survey Results

What are the most severe health issues experienced in your community? (Please choose up to two issues.)



# What do we plan on achieving?

- Identify key community health initiatives to expand
- Utilize committee resource & expertise sharing
  - Increase community awareness of resources
- Allow more public health initiatives to be both ***affordable and accessible***

# Thank You

*Open door  
policy*



Please email any questions or participation interest to:

[c-elebo@pa.gov](mailto:c-elebo@pa.gov)